

## MEET YOUR TEACHER

### Friday, August 16, 2019

This reception will give our teachers the opportunity to welcome you and, in turn, offer you some time to meet the teachers who will be working with your children this year. We are very excited about the approaching school year and look forward to sharing this excitement with you.

#### SCHEDULE:

New Family Orientation	8:00 am – 9:00 am	Library
Meet Your Teacher Reception	9:00 am – 10:00 am	Front Lawn
Welcome to Junior High Parent Meeting	10:00 am – 11:00 am	Library
Blackbaud & Magnus Help	10:00 am – 12:00 pm	Computer Lab

## FIRST DAY OF SCHOOL

### Monday, August 19, 2018

Extended Day Opens	7:00 am
Preschool* - Kindergarten	8:30 am – 2:50 pm
1st & 2nd Grade	8:20 am – 2:50 pm
3rd - 5th Grade	8:20 am – 3:15 pm
6th - 8th Grade	8:10 am – 3:15 pm
Extended Day Closes	6:00 pm

\*Half day students are dismissed at 12:15 pm

- Students (other than preschool) must wear Fairmont uniforms.
- Students will be released for parent pick-up as follows: JK-2nd (2:50 pm), 3rd-8th (3:15 pm).
- Preschool and PreK will be escorted to parent pick-up by a teacher at 2:50 pm.
- Students may not be picked up outside of designated student pick-up areas. The Business Office and staff parking lots are not pick-up/drop-off areas.
- Students not picked up by 4:30 pm will be signed in to Extended Day and a daily drop-in fee of \$25 will be charged.

#### Procedures:

If arriving on campus before 8:00 am

- Preschool and Pre-K students will report to their assigned classroom. Please sign in at the front desk using the Tadpoles kiosk.
- Junior Kindergarten through 2nd grade will report to the library.
- 1st and 2nd-grade students will be taken to class at 8:15 am.
- 3rd - 5th grade students report to the gym. Students will be picked up in the gym by their classroom teachers at 8:15 am.

#### Jr. High Procedures:

- If arriving on campus before 7:45 am, 7th-8th grade students report to the cafeteria. Students will be directed towards the locker area at 8:00 am.
- At the 8:10 am bell, students will report to their first-period class. Note that students may cross the street unassisted. Please exercise caution at all times.
- Duplicate schedules are available in front of the junior high building.

#### Dismissal:

See PARENT PICK-UP AND DROP-OFF on the next page.

## YOU'RE INVITED: BACK TO SCHOOL celebration and FAMILY PICNIC!

### Friday, August 23, 2019, 4:00 pm – 7:00 pm

We are excited to kick off another wonderful school year with a Back-to-School Picnic hosted by our FPA on Friday, August 23. Parents and friends are invited to join us in the evening to celebrate our first week of school and to catch up with their Fairmont Family. Please bring your lawn chairs and a comfy blanket!

## PARENT PICK-UP AND DROP-OFF

As the new school year approaches, we would like for you to please review our pick-up and drop-off procedures. Careful planning has gone into these protocols in order to assure the maximum safety of your children. Your careful attention is appreciated.

### Preschool, Pre-K, JK, & Kindergarten

**Start Time: 8:30 am**

**End Time: 2:50 pm**

**Morning Drop-off:** JK-K: Drop-off location is the north side of Mable Street before the big tree. Please enter from Broadway Avenue. Preschool, Pre-K: Drop-off is in the child's classroom. Preschool and Pre-K parents may park under the big tree in the preschool/pre-k loading zone for drop off or curbside service.

#### After School Pick-up:

- Students without a sibling or carpool may be picked up on the north side of Mable Street by the fig tree at 2:50 pm. Please enter from Broadway Avenue.
- Students with a sibling or carpool may be picked up on the north side of Mable Street by the fig tree at 3:15 pm. Please enter from Broadway Avenue.
- Licensing requires all Preschool and Pre-Kindergarten students to be signed-out every afternoon. Be sure to use the iPad kiosk in the Front Office to sign-out your child using your assigned, unique pin-code.

### 1ST GRADE STUDENTS

**Start Time: 8:20 am**

**End Time: 2:50 pm**

**Morning Drop-off:** Drop-off location is the north side of Mable Street (by the fig tree). Please enter from Broadway Avenue

#### After School Pick-up:

- Students without a sibling or carpool may be picked up on the north side of Mable Street by the fig tree at 2:50 pm. Please enter from Broadway Avenue.
- Students with a sibling or carpool may be picked up on the north side of Mable Street by the fig tree at 3:15 pm. Please enter from Broadway Avenue.

### 2nd Grade Students

**Start Time: 8:20 am**

**End Time: 2:50 pm**

**Morning Drop-off:** Students may be dropped off either at the north side of Mable Street by the fig tree or on the south side of Mable Street by the Pool/Blacktop area.

#### After School Pick-up:

- Students without a sibling or carpool may be picked up on the north side of Mable Street by the fig tree at 2:50 pm. Please enter from Broadway Avenue.
- Students with a sibling or carpool may be picked up on the north side of Mable Street by the fig tree at 3:15 pm. Please enter from Broadway Avenue.

### 3rd Grade Students

**Start Time: 8:20 am**

**End Time: 3:15 pm**

**Morning Drop-off:** Students may be dropped off either at the north side of Mable Street by the fig tree or on the south side of Mable Street by the Pool/Blacktop area.

**After School Pick-up:** Students will be picked up on the north side of Mable Street by the fig tree at 3:15 pm. Please enter from Broadway Avenue.

### 4th Grade Students

**Start Time: 8:20 am**

**End Time: 3:15 pm**

**Morning Drop-off:** Students may be dropped off either at the north side of Mable Street by the fig tree or on the south side of Mable Street by the Pool/Blacktop area.

DO NOT DROP STUDENTS OFF IN THE STAFF PARKING LOT.

**After School Pick-up:** Students will be picked up on the north side of Mable Street by the fig tree at 3:15 pm (Please enter from Broadway Avenue)

## 5th Grade Students

**Start Time: 8:20 am**

**End Time: 3:15 pm**

**Morning Drop-off:** Students may be dropped off either at the north side of Mable Street by the fig tree or on the south side of Mable Street by the Pool/Blacktop area.

DO NOT DROP STUDENTS OFF IN THE STAFF PARKING LOT.

**After School Pick-up:** Students will be picked up on the north side of Mable Street by the fig tree at 3:15 pm (Please enter from Broadway Avenue)

### After School Pick-up:

- 5th-grade students without a sibling or carpool may be picked up on the north side of Mable Street by the fig tree at 3:15 pm (Please enter from Broadway Avenue)
- Students with a sibling or carpool may be picked up on the north side of Mable Street by the fig tree at 3:15 pm (Please enter from Broadway Avenue)

## 6th - 8th Grade Students

**Start Time: 8:10 am**

**End Time: 3:15 pm**

**Morning Drop-off:** Students should be dropped on the south side of Mable Street by the Pool/Blacktop area. Please enter from Loara Street.

### After School Pick-up:

- Students without a sibling or carpool may be picked at the pool/blacktop area at 3:15 pm (Please enter from Loara Street)
- Students with a sibling or carpool may be picked up on the north side of Mable Street by the fig tree at 3:15 pm (Please enter from Broadway Avenue)

## FP and IFY International Students 6th - 8th

**Start Time: 8:10 am**

**End Time: 3:15 pm**

**Morning Drop-off:** Students should be dropped on the south side of Mable Street by the pool/blacktop area. (Please enter from Loara Street)

### After School Pick-up:

- Students without a sibling or carpool may be picked at the pool/blacktop area at 3:15 pm (Please enter from Loara Street)
- Students with a sibling or carpool may be picked up on the north side of Mable Street by the fig tree at 3:15 pm (Please enter from Broadway Avenue)

## Pickup Procedures

- A student services staff member will call your children to the car for parent pickup. Please make sure that your placard is placed on your dash in the front window of your car so that the caller can see it.
- Please continue to move your car up in the parent pickup line as cars pull out to drive away.
- Parking on either side of Mable Street is not permitted between the hours of 2:00 pm and 4:00 pm.
- Do not stop and get out of your car to look for your child.
- Do not leave your car unattended in the pickup line.
- Please adhere to the red curbs, cones, and carefully posted NO PARKING signs at all times. All elementary students (JK - 5th) must use the crosswalk with the crossing guard; this ensures the safety and visibility of that crosswalk.

**Should you have any questions, please call the front office at (714) 563-4050.**

### Please Note

- There is a crossing guard on duty to cross your children to the cafeteria (if necessary) and then to class at the appropriate times. Junior high students cross on their own.
- **Please, do not drop your children off at the local businesses that surround the school. When you drop your children there, you are putting them in danger while obstructing the normal process of the businesses. Parked cars may be towed.**
- On early dismissal Fridays, parent pick up begins at 12:00 pm and ends at 12:30 pm.

We have adults to help the students make a quicker exit from their cars. You can help us in this effort in the following ways:

1. Have your child ready to exit the car as soon as you approach the school.
2. Avoid parking while in the drop-off line. Visitor parking is available on the south side of Mable. (Please enter off Broadway Avenue).
3. Drive courteously and with caution.
4. **Please do not make U-turns on Mable Street.**

## HISTORIC ANAHEIM CAMPUS STUDENT SERVICES & AFTER SCHOOL PROGRAMS

### **2:50 pm – 3:15 pm**

Preschool, Pre-K, JK, K and 1st Grade: Students enrolled in extended day and those with a sibling or carpool will play on the playground until 3:15 pm dismissal.

### **2:50 pm – 3:15 pm**

2nd Grade: Students enrolled in extended day and those with a sibling or carpool will remain in the classroom until the 3:15 pm dismissal time.

### **3:15 pm**

K-8th Grade: Students enrolled in the extended day will check in with Program Leaders on the playground. Attendance will be taken and students will remain in the playground area until Homework Club begins. Students who remain after parent pick-up will follow this procedure as well.

### **3:30 pm – 4:15 pm**

K-5th Grade: Students will be taken to the appropriate locations for the Panther Plus Program. All students not participating in an enrichment workshop will be taken to the Homework Club.

### **3:30 pm – 4:15 pm**

6-8th Grade: Students will be taken to the appropriate locations for junior high Academic Assistance.

### **4:15 pm – 6:00 pm**

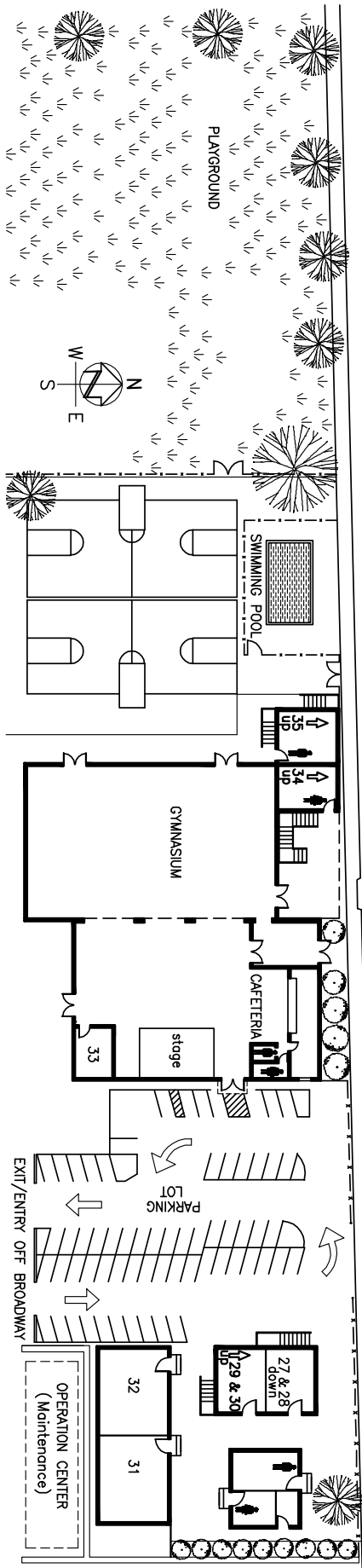
K-8th Grade: During the months that it becomes dark before 6:00 pm, students will be brought back into the library area for free time or additional study hall time (if necessary). During months that it remains light past 6:00 pm, students may remain on the playground or return to the Library Area.

### **PLEASE NOTE:**

- A sign out sheet will be maintained in each area where the students will be located. It is important that parents initial and put the time of pick-up on the sign-out sheet each day. All students in the extended day must be signed out by an authorized person(s) unless written permission is given beforehand to release a child to another adult. If proper notification is not given to the school, the school reserves the right to refuse to release the child. ID cards will be checked if our Program Leaders do not recognize the person picking up the child. If the adult cannot show adequate personal identification, the school reserves the right to refuse to release the child.
- If a child is picked up after 6:00 pm, parents will be charged our late fee of \$5.00 for the first 10 minutes and \$1.00 per minute for every minute thereafter. Parents will be billed for this fee.
- When students stay past 4:30 pm in extended care but are not enrolled in the extended day program, parents will be billed the daily drop-in fee of \$25.00 per day.
- On early dismissal Fridays, any student not picked up by 4:30 pm will be enrolled in the extended day program for that day and will be billed accordingly.

### **TRANSPORTATION CHANGES:**

- Beginning in the 2019-20 school year, there will be only one afternoon/evening bus departure from HAC. There will no longer be a 3:00 pm bus departure nor will there be a 5:30 pm late bus. The only bus departure from HAC will be the 4:15 pm route.
- Bus riders will be dismissed from afterschool homework club at 4:05 pm to board their bus.



MABLE STREET

